





A Data Visualisation Tool for Radionuclide Detection Events

Daniel Chester, Matthew Goodwin

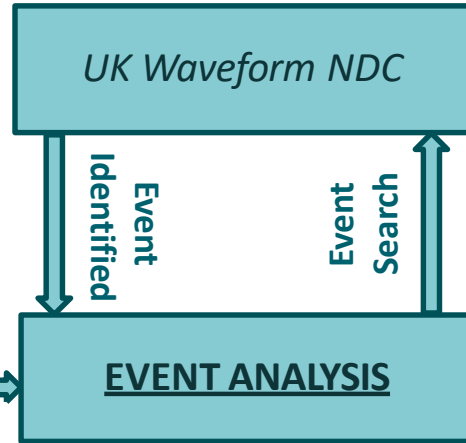
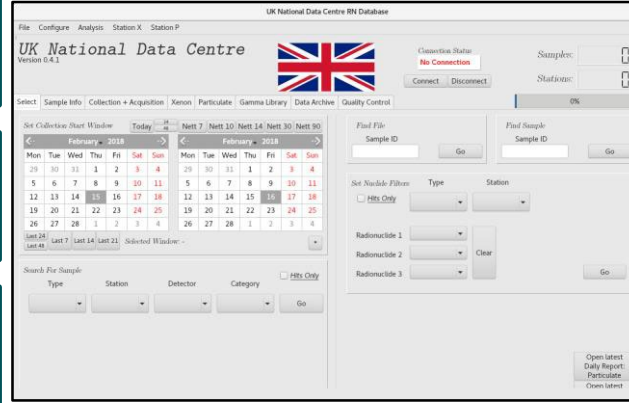
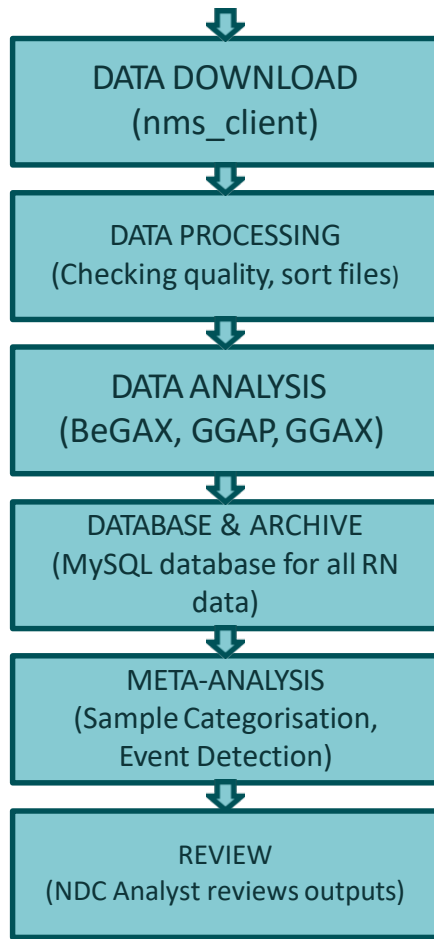
UK NDC, AWE Aldermaston, UK, RG7 4PR

WOSMIP Remote 2, 27th May 2021

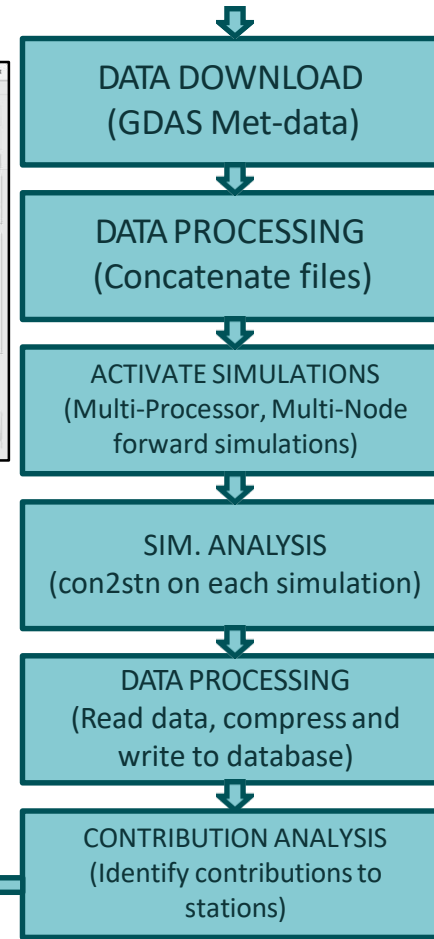
Daniel.Chester@awe.co.uk



RN PIPELINE



ATM PIPELINE



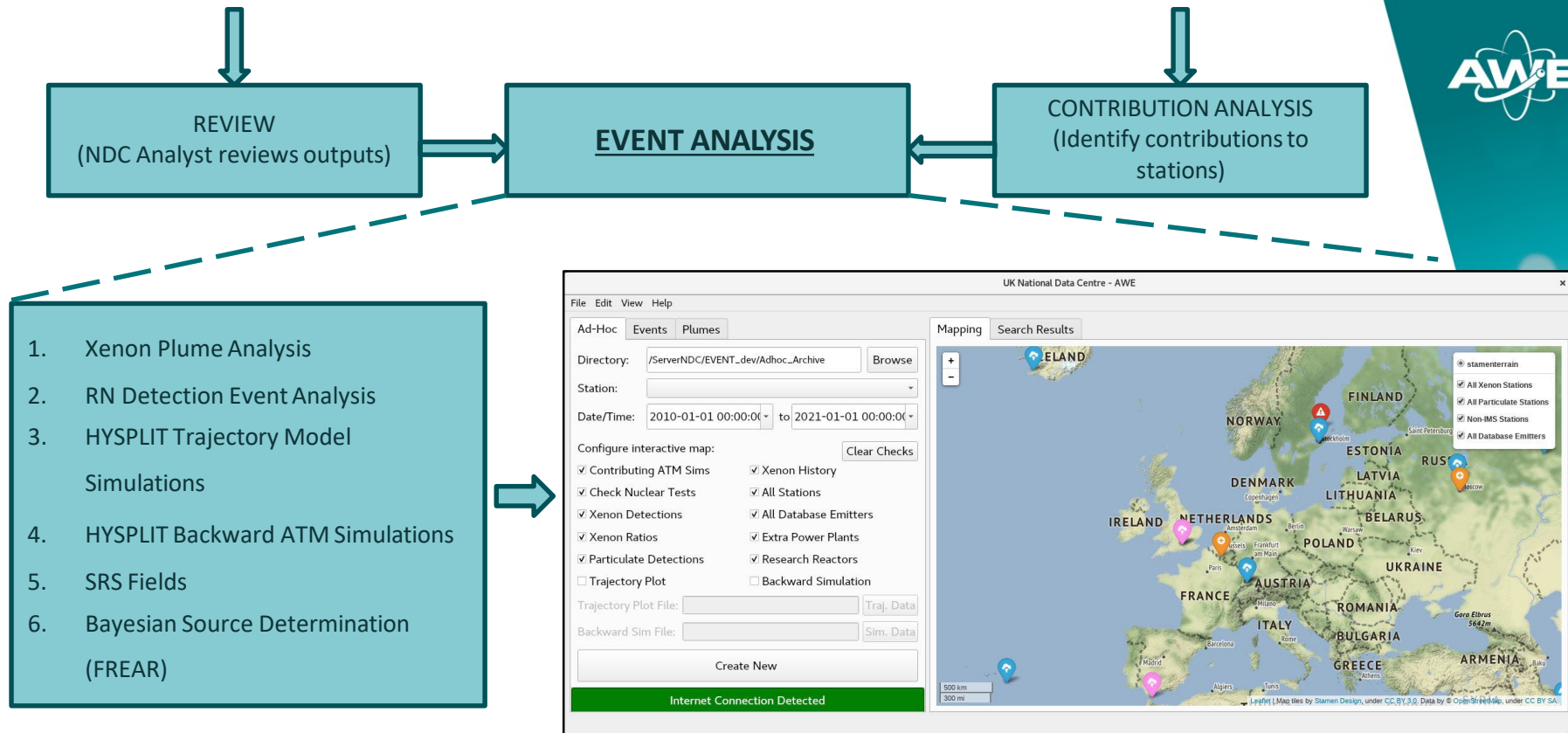
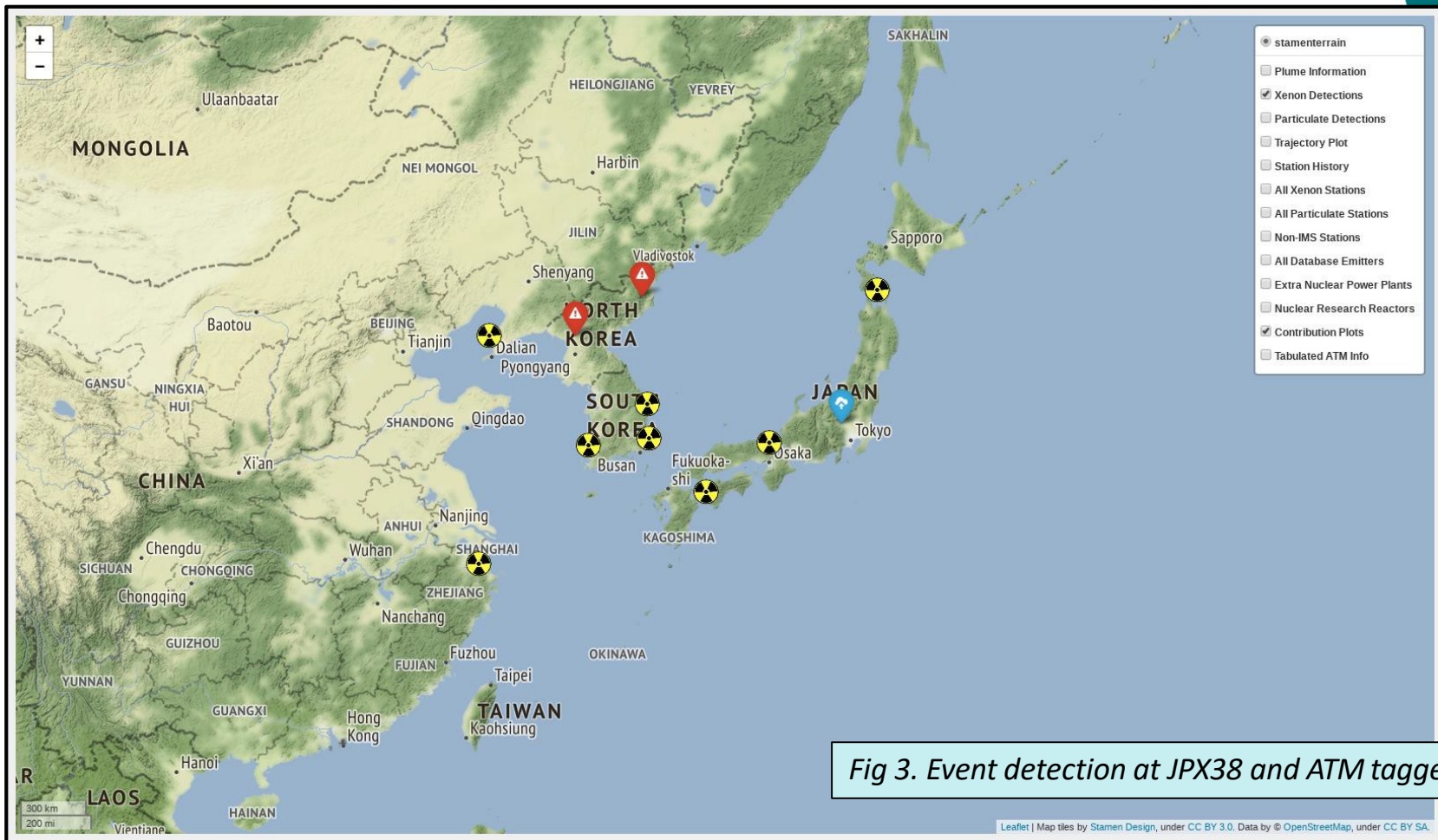


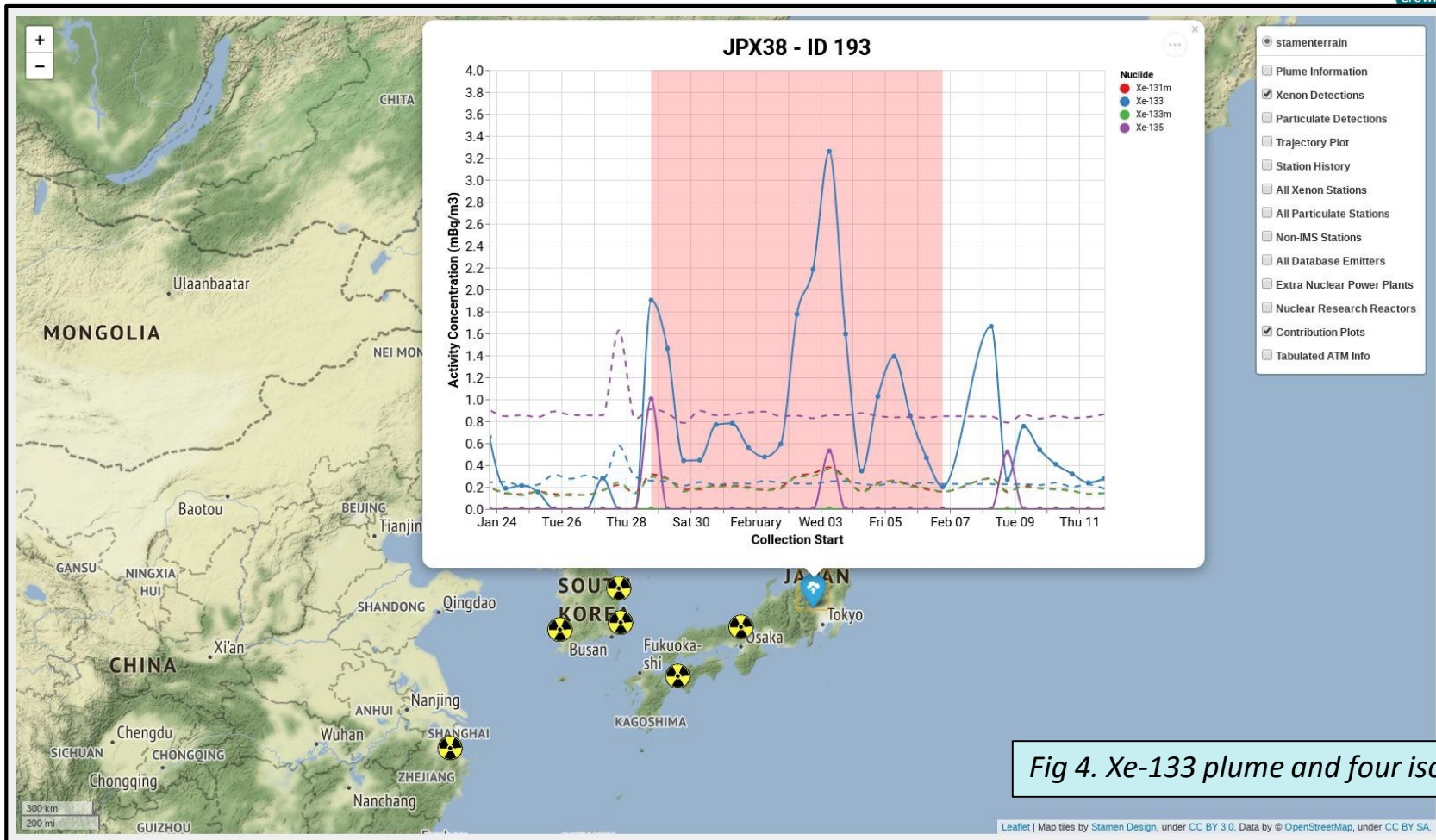
Fig 2. Event analysis pipelines and CARVE graphical user interface



CARVE – Contributions Analysis of Radionuclides from Virtual Emitters

- Custom software tool produced by UK NDC for the analysis of radionuclide detection events on the International Monitoring System.
- Fuses the outputs of several automated data streams into a single source, allowing for rapid data interrogation by analysts.
- Assigns simulated atmospheric transport modelling contributions from known radionuclide emitters to the collection period of interest to assess station sensitivity.
- Data is visualised on interactive virtual maps. Package is completed with a graphical user interface from which users can customise algorithm parameters and view relevant database fields.







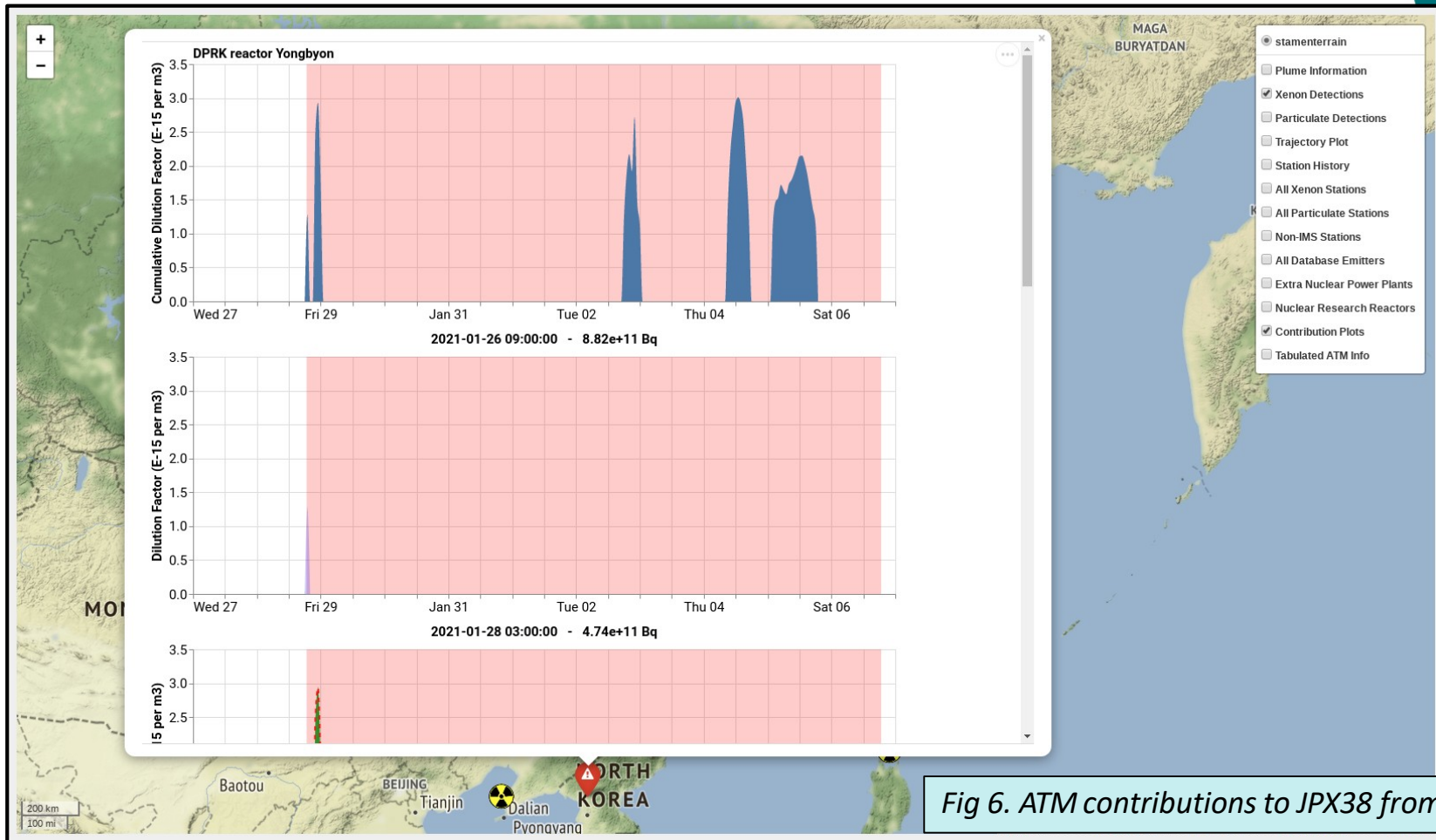


Fig 6. ATM contributions to JPX38 from Yongbyon

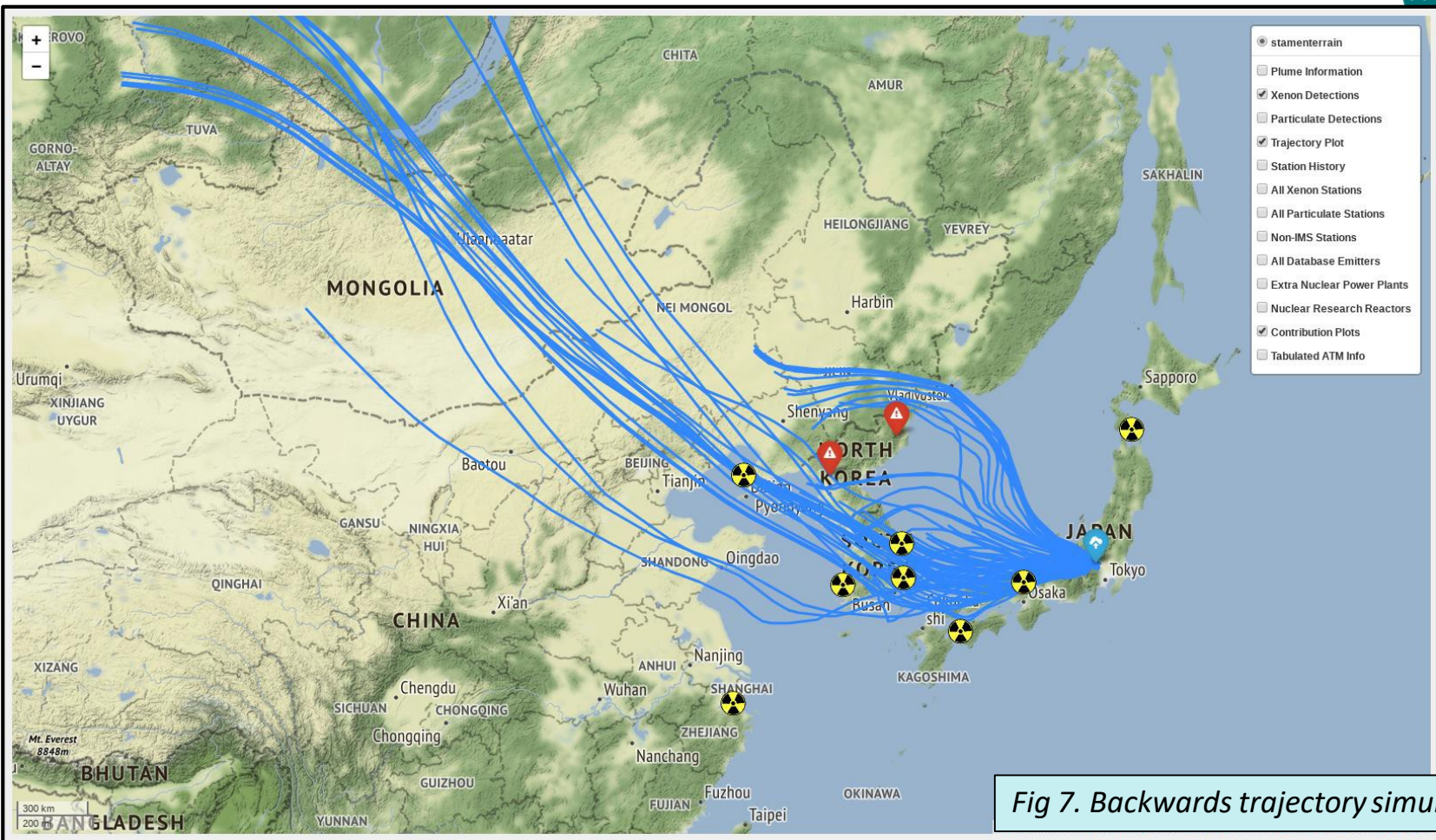
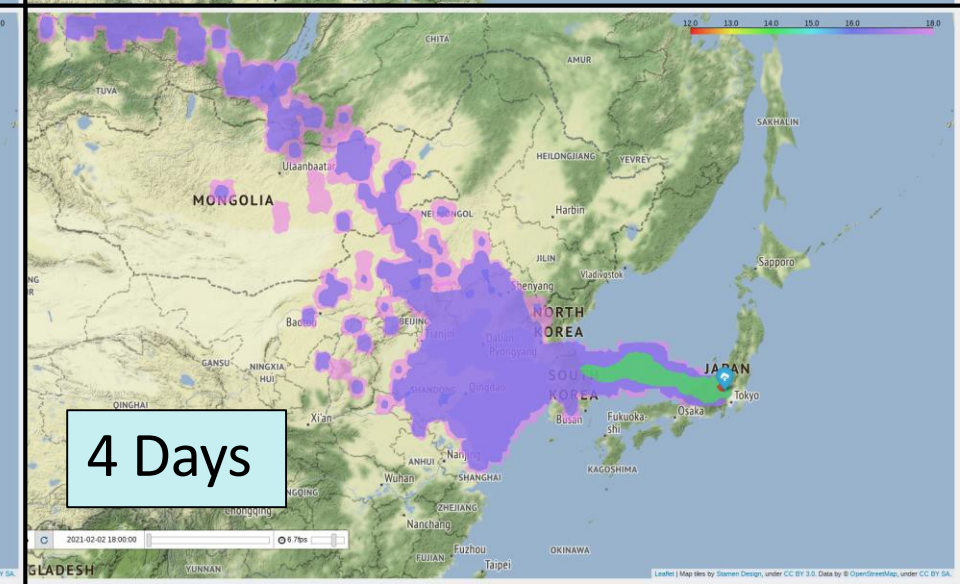
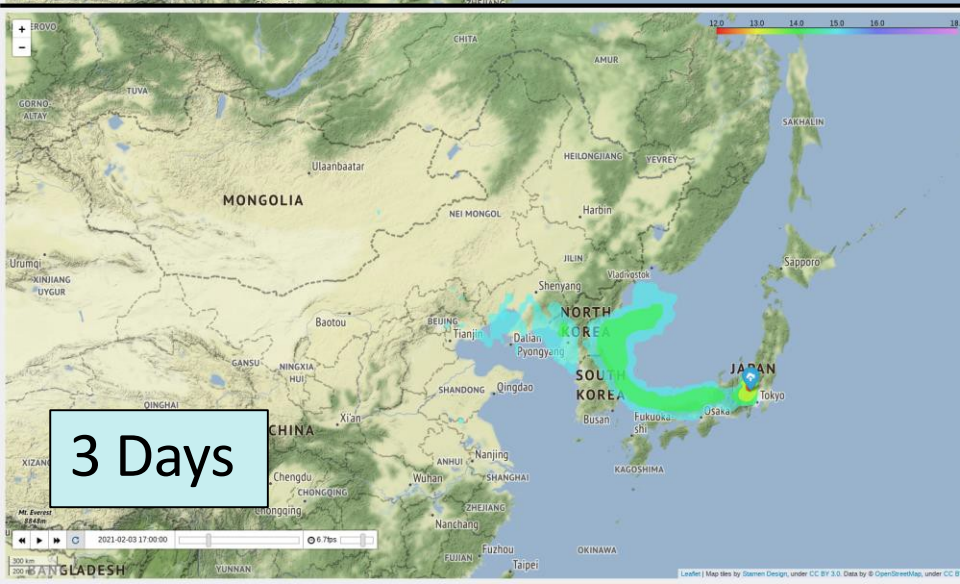
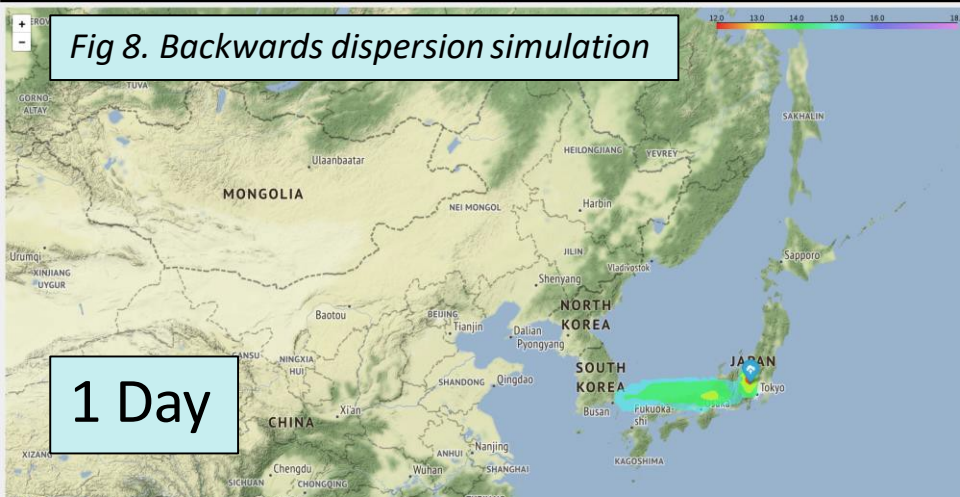


Fig 7. Backwards trajectory simulations

Fig 8. Backwards dispersion simulation





CARVE

- Filters down terabytes of meteorological data, gigabytes of radionuclide data and megabytes of HYSPLIT results for analysts to review.
- All this information is contained within a small, easily manageable .html file, which can be interacted with from within the CARVE graphical user interface or from an internet browser.
- These files are produced automatically upon the identification of new radioxenon plumes or high-category detection events.
- CARVE files for many years of historical IMS data have been produced and archived within the UK NDC, should the need arise to interrogate the data.



Summary

- The UK NDC operates and maintains a series of custom automated pipelines for the analysis of radionuclide data relevant to the verification of the Comprehensive Nuclear-Test Ban Treaty.
- CARVE is a data visualisation tool for the analysis of radionuclide detection events on the International Monitoring System. It presents relevant data in a single place, to allow analysts to make informed decisions.



Thank you.
Any Questions?